







Holidays

What did you do on your last holiday?

4 Watch part 2 and match people 1-6 to

holidays A-F

 1	 2
 3	 4
 5	 6

A went to Devon ate ice cream
went to the beach walked round the town

B went to the south of England
went to the beach went swimming
ate lots of ice cream

C went to Holland played in the lake
camped

D went to Mallorca went cycling every day
went swimming

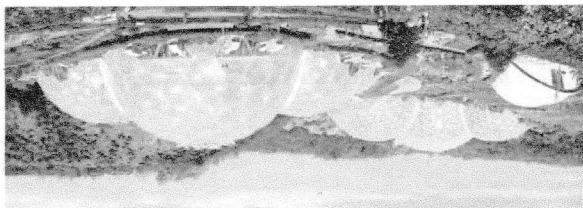
E went to the north of England
stayed by a lake saw grandparents

F went to Sri Lanka went to the seaside
saw people catching fish

1 Watch part 1. Which place can you do these

activities in? Write B for Bournemouth, C for

Cornwall, or L for the Lake District.



- go mountain biking
- learn to surf
- go kayaking
- go to a fun fair
- fly a kite
- walk in the beautiful parks
- go to the theatre
- visit the Eden Project
- walk in the mountains

2 Are the sentences true (T) or false (F)? Watch part 1 again and check your answers.

- 1 Lots of families visit Bournemouth.
- 2 There is a train line on Bournemouth pier.
- 3 Cornwall is the most popular holiday destination in England.
- 4 The Eden Project has plants from many different countries.
- 5 The Lake District is only popular in the summer.
- 6 Louise and her friends didn't relax in the Lake District.

3 Choose the correct words.

- 1 Bournemouth became popular in the 1870s / 1880s.
- 2 In the past, people travelled to Bournemouth by car / train.
- 3 Cornwall is in the south-east / south-west of England.
- 4 The greenhouses at the Eden Project are called biomes / pasties.
- 5 Fifty / Fifteen million people visit the Lake District every year.